



















ORNA
MENT
AUSSTELLUNG
GEWERBEMUSEUM
20. FEBRUAR BIS
27. MÄRZ
BERG
RIED

LEO MAYER GÖTTSCHE



MISAKI KAWAI









BOOKFORUM

FEB/MAR 2017

VOLUME 23, ISSUE 5

PLEASE
EXCUSE
THE
TERRIBLE
INJUSTICE

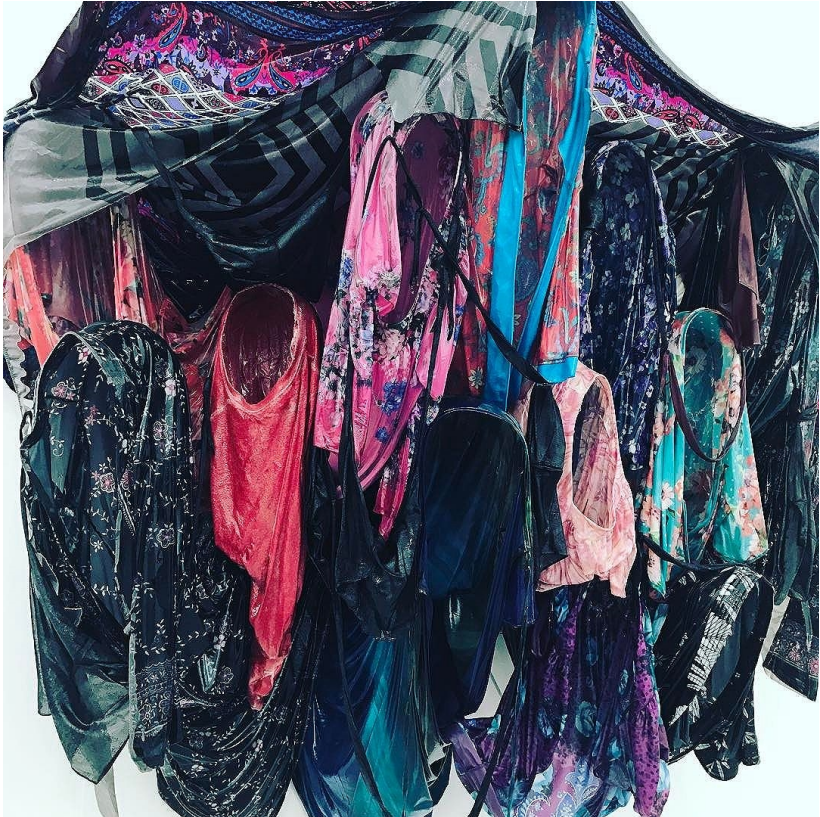
THANK-YOU

\$5.95

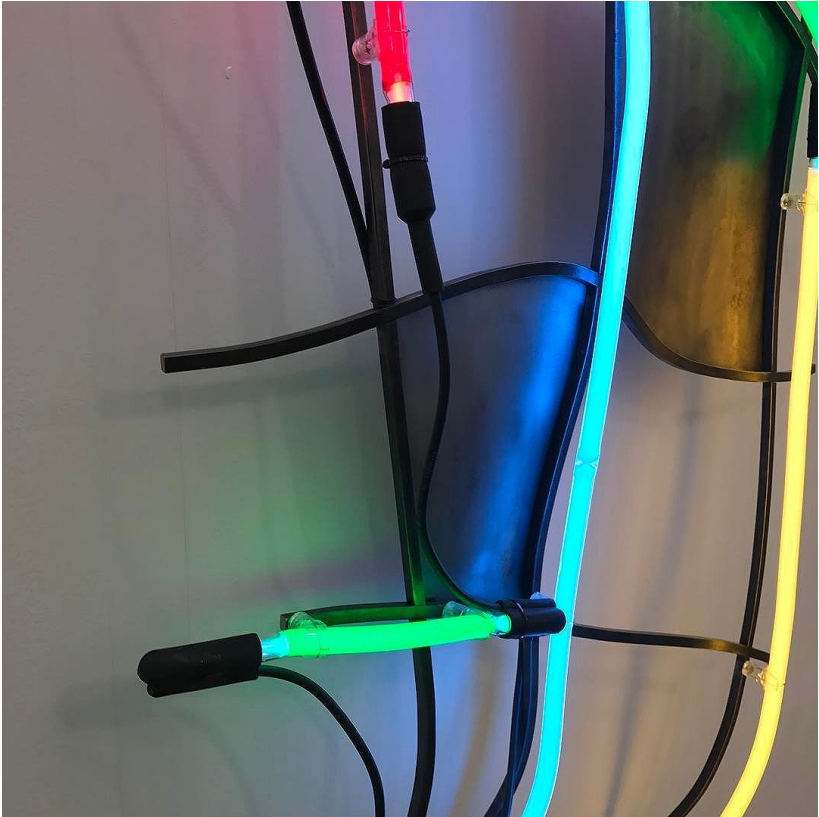


03>









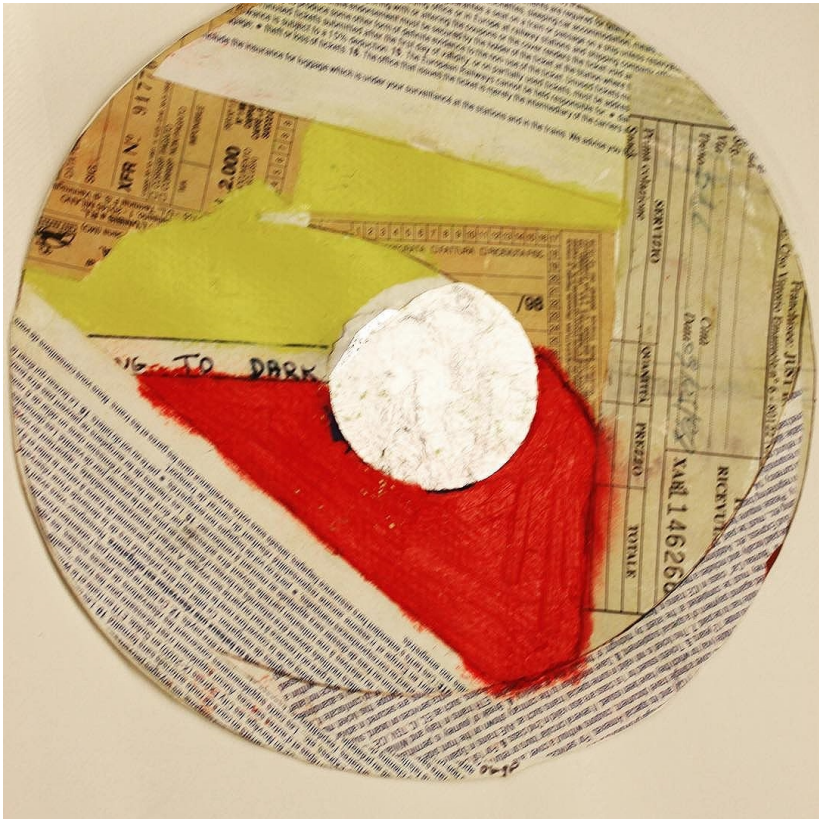






▲ Serendipity
Three chair,
priced depending
on choice of wood
and leather finish,
[johnmakepeace
furniture.com](http://johnmakepeacefurniture.com)





















Louise Bourgeois

Louise Bourgeois

THE CLIMBERS *JIM HERRON*

BOLTON

REI KAWAKUBO / *COMME des*

at Portsmouth, the 21st day of August
in the year of our Lord one thousand ~~three hundred~~
and seventy nine



James M. [unclear]
John [unclear]
Trustee
Joseph P. [unclear]
Richard [unclear]
Samuel [unclear]
John [unclear]
James [unclear]

Share number #02 was
first issued in 1823
previous owner
dis-





**How might we improve
neighborhood safety?**

QUESTION # 006

**How might we make
vacant or blighted
properties useful and
desirable?**

QUESTION # 012



THE
RED
FAIRY
BOOK





HILL COUNTRY CLASSIC!

BY FAR SOME OF THE BEST
BLUES RECORDED IN THE 1980'S.
JESSIE MAE IS THE GRANDDAUGHTER
OF THE GREAT SID HEMPHILL
AND TORCH BEARER OF ONE OF
THE MOST BEAUTIFUL TRADITIONS
IN THE WORLD OF MUSIC.

COMES W/ A KILLER
BOOKLET FULL OF PHOTOS
AND LINER NOTES!

